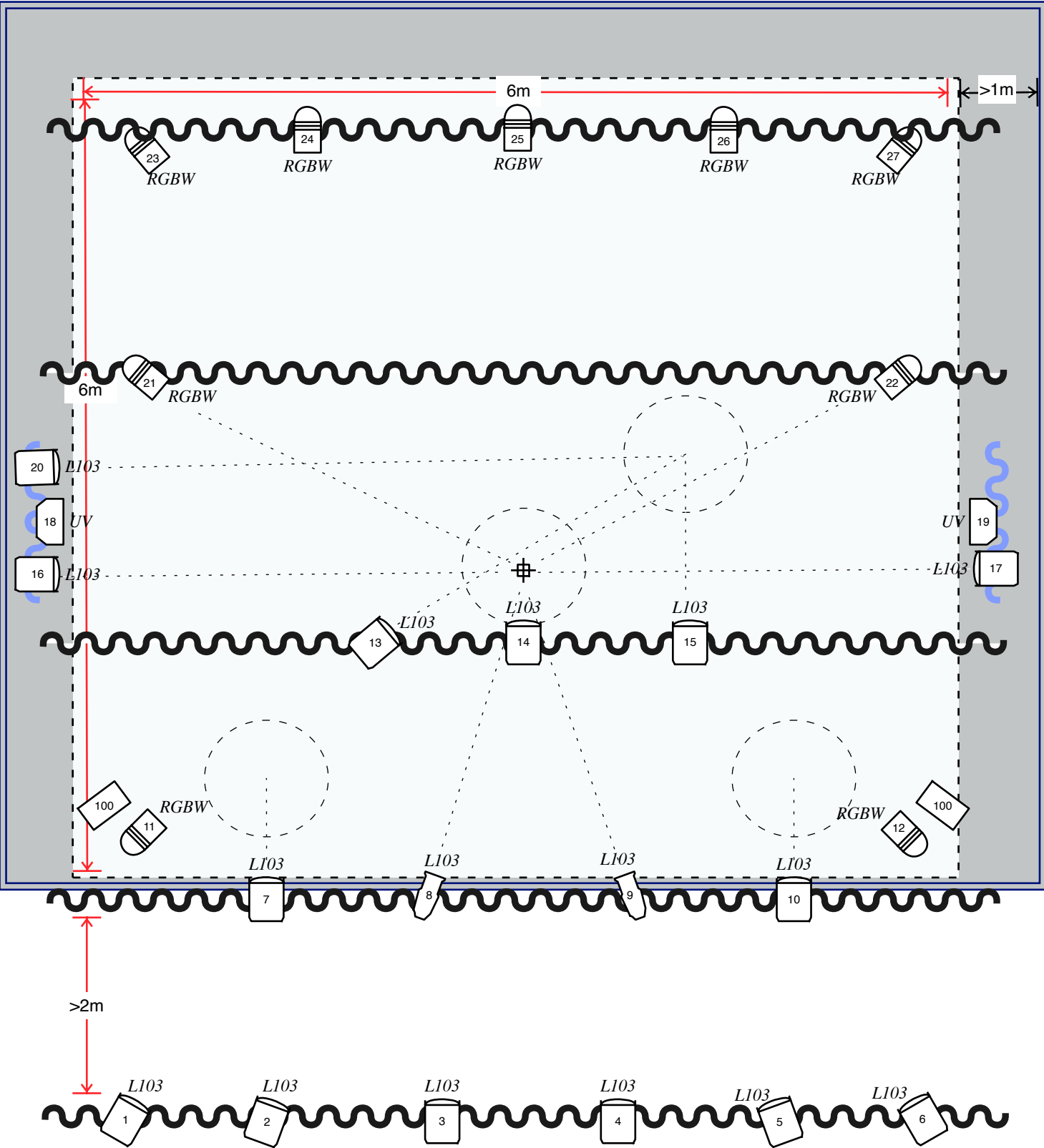



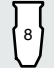

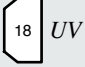



ERROR #440

Light Plot



ERROR #440

Light Plot

<i>L103</i> 	14	PC/Fresnel 1000W (or equivalent LED fixture)
<i>L103</i> 	2	ETC 750W 36° (or equivalent LED fixture)
<i>RGBW</i> 	9	Prolights Versapar
	2	Prolights FlatCob 80UV
	2	Beamz Rage 1000LED
	5	Truss/Pipe
	2	Wind Up with crossbar (min 3 m high)

Technical data sheet and requirements

Chilowatt _ **ERROR #440** [Full]

Attention!

If the any of the requests is not sustainable for you, lets talk about it: we might find an agreement, but we do not like surprises;

The following data sheet is part of the contract!

STAGE

Stage : **6x6 m.**

- *If the stage is equal or above 7x7 meters, it must enclosed with **black wings and backdrop.***
- *If the stage is below 6x6 meters it might be IMPOSSIBLE to correctly perform the show, feasibility must be discussed with the company directly.*

LIGHTS

We require:

- ➔ #14 **PC/Fresnel 1kw** (or equivalent LED fixture)
- ➔ #9 **Prolights Versapar** (or equivalent RGBW & motorized ZOOM fixture)
- ➔ #2 **ETC 750W 36°** (or equivalent LED fixture)
- ➔ #2 **Prolights FlatCob 80UV** (or equivalent UV fixture)
- ➔ #2 Beamz Rage 1000LED **Smoke Machine** (or equivalent fixture)
- ➔ # **audience light** (controllable by the FOH)
- ➔ #18+ **DIMMER** Channels
- ➔ #2 **Wind ups** with **crossbar** (at least 3 m high)
- ➔ #5 **Truss/pipes** positioned like in the light plot
- ➔ **EOS Family Console** equipped with latest software
- ➔ Dmx transport: Stage ↔ FOH
- ➔ CAT transport: Stage ↔ FOH

SOUND

The system must be wired up and running 30 minutes before the arrival of the company and must be appropriated to the auditorium.

We require:

- ➔ **Mixer** minimum **8 channels**, L & R wired (In the case of a digital mixer we need to know before the brand and the model, and it will need physical fader controls for at least 8 channels and the Master Bus).
- ➔ **Stagebox** minimum **6 inputs**.
- ➔ #2 **stage monitors**, suitable for the stage, on stands positioned stage L and stage R (the wiring leading to the stage box)
- ➔ #4 **Sennheiser EW-D** wireless transmitter/receiver + compatible headset mics (#2 for stage + #2 backup)

Technical data sheet and requirements

Chilowatt _ ERROR #440

Channel List

2 CH line connected to stagebox.
2 CH x 2 radio HEADSET mics connected to stagebox.
2 CH line [PC backup] from FOH.

STAFF REQUIRED

#1 **stageman**

#1 **electrician**

The company needs to know the theatre technician's schedule in due time.

TIMELINE

9:00 Company arrival

9:30 → 12:30 Stage buildup + Wings and backdrop + lighting & audio setup

13:30 → 15:30 Soundcheck + light patching & adaptation + focus

16:00 → 18:00 Rehearsal

18:00 → 21:00 Rest – stage cleanup

21:00 → 22:00 Show

22:30 → 00:30 Smontaggio

OTHER

Dressing room equipped with toilets and showers and drinking water for the crew.